

Millennium Plus Door System with thermal break

Coplanar door entry system with straight 70 mm and thermally broken for commercial premises and buildings.

With a transmission value from only 0.9 W/m²K, it reaches unbeatable thermal features and its great glazing capacity guarantees a maximum acoustic insulation.

Possibility of high resistance hinges (face fix or re-inforced in to the channel) capable of supporting up to 220 kgs in weight per sash.

Possibility of hidden hinges with maximum dimensions and weight per sash of 2700 mm in height, 1500 mm in width and 120 kgs. and with a maximum sash opening of 100°.

It presents solutions of finishing to the floor and compatible meeting styles with our actual systems.

It is valid as a configuration for an emergency exit with anti-panic devices according to EN 179 & EN 1125 norms.

There is also the option of incorporating an automatic mechanism or its motorization that allows automatic hinged openings.



Millennium Plus Door System with thermal break

Transmittance

Uw from 0.9 (W/m²K)

Please consult typology, dimensions and glass

Acoustic insulation

Maximum glazing: 54 mm.

Maximum acoustic insulation **Rw=38 dBA**

Finishes

Possibility of dual colour

Colour powder coating (RAL, mottled and rough)

Wood effect powder coating

Anti-bacterial powder coating

Anodized

Categories achieved at test centre

Air permeability (EN 12207:2000): **Class 4**

Water tightness (EN 12208:2000): **Class 6A**

Wind resistance (EN 12210:2000): **Class C4**

Door test reference 1,20 x 2,30 m. 1 sash

Resistance to mild impact

Test carried out according to norm EN 13049:2003

CLASS 5 (max)

Test on door reference 1,80 x 2,20 m. 2 sashes. Laminated glass 3+3

Resistance to repeated openings and closings

Test carried out according to norm EN 1191:2000

500.000 cycles

Test on door reference 0,935 x 2,10 m. 1 sash



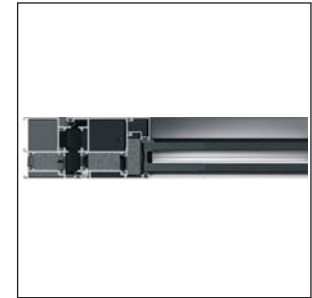
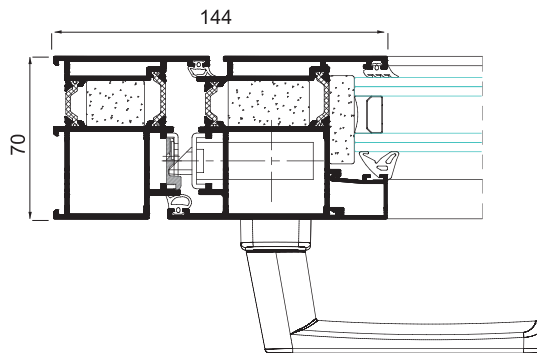
Sections

Frame 70 mm.
Sash 70 mm.

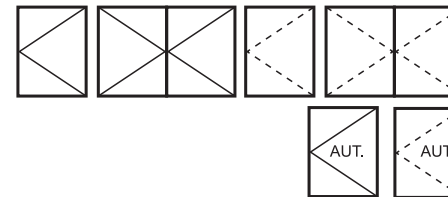
Profile thickness

Door 2,0 mm.

Polyamide strip length 24 mm.



Opening possibilities



Open in: practicable
1 & 2 sashes.

Open Out: practicable
1 & 2 sashes.

Automatic opening: internal and
external hinged single sash

Maximum dimensions/sash

Width (L) = 1.800 mm.

Height (H) = 3.000 mm.

Please consult regarding maximum weight and dimensions according to types

Maximum weight/sash

220 Kg.

120 Kg.(hidden hinges)